

# N3073 Dome Network Camera



## 2 Megapixel / H.264 / 720P Real-Time

- 2 Megapixel 1/3" CMOS Sensor in High Resolution
- H.264/MJPEG Dual Codec & Streaming simultaneously
- Fixed Lens 3.6mm , F1.8
- 3-Axis Mechanical Design for Ceiling Installation
- Up to UXGA (1600x1200@15fps) / WXGA (1280x720@30fps)
- Digital I/O for External Sensor and Alarm
- 3D Noise Reduction
- 2 Way Audio Supported
- Intelligent Video Analytics
- 3GPP Supported
- Micro SD Card Supported (SDHC up to 32GB)
- IP68 Water and Vandal Proof
- PoE Power Over Ethernet IEEE802.3af (Option)



### Specifications

Camera	
Sensor	2 MegaPixel 1/3" CMOS sensor
Scan Method	Progressive
Lens	Fixed Lens 3.6mm , F1.8
Number of Effective Pixel (H*V)	1600x1200
Minimum Illumination	0.1Lux (F1.6, AGC max.)0Lux (IR On)
Horizontal Resolution	950TVL
Dynamic Range	71
SNR(max)	42.3db
White Balance	Auto
Gain Control	High/Middle/Low, 3 step selection
Flicker Control	Off/50Hz/60Hz, 3 steps selection
Backlight Compensation	On/Off
Electronic Shutter	Auto/Slow Shutter (2X~16x / 5 steps selection)
Panning Coverage	-174°~ 174°
Tilting Coverages	0°~ 65°

Video	
Video Compression	H.264 (MPEG-4Part 10/AVC)/MJPEG,Dual codec
Video Framerate	1600x1200@15fps/1280x720@30fps
Resolution	H.264 : 2M(1600x1200@15fps) 720P(1280x720@30fps) MJPEG : 2M(1600x1200@15fps) 720P(1280x720@15fps)
Bitrate control	CBR and VBR, 128kbps~4Mbps
Multi-streams	Dual streaming, Multiple profiles 1280x720 H.264@30fps/640x352 H.264(Sub) @30fps/1280x720 MJPEG@15fps 1600x1200 H.264@15fps/640x480 H.264(Sub) @15fps/1600x1200 MJPEG@15fps
Digital Zoom (PC side)	1/4X, 1/3X, 1/2X, 1X, 2X, 4X
Image Rotation	Mirror, Flip, Rotate 180°

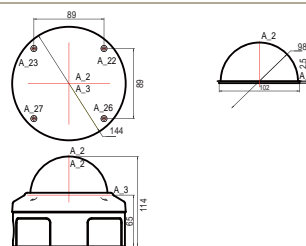
Intelligent Video	
De-noise	Yes
Motion detection	Yes
Blind detection	Yes
Privacy Mask	Yes

Audio	
2 Way Audio	Audio Line-in, Audio Line-out
Compression	AMR, G.711 @ 64kbps, G.726 @ 32kbps/ Configure bit rate

Network	
Streaming Protocols	RTSP/RTP/UDP, RTSP/RTP/TCP, RTSP/RTP/HTTP tunneling, LAN Multicast, Multipart-JPEG
Supported Protocols	IPv4, IPv6, HTTP, UDP, TCP, ICMP, IGMP, ARP, DHCP, NTP, SMTP, FTP, SAMBA, UPnP, PPPoE, DNS, DDNS, RTSP, RTP, RTCP, ONVIF
Mobile Surveillance	iPhone, iPad, Android, BlackBerry
Storage	
External	1 x Micro SD Card (SDHC up to 32GB)
Processors and Memory	
CPU	ARM9 SOC
Flash and Memory	16MB ROM, 256MB DDRII
I/O and Connectors	
LAN	1x RJ-45 Ethernet connector
Audio	1x Audio Line-in, 1x Audio Line-out
Alarm I/O	1x Alarm-in (2pin), 1x Alarm-out (3pin)
Serial Port	RS485 (2pin)
Software Compatibility	
Browser	Internet Explorer 6.0 or above
Application Software	VMS Application Software
OS supported	Microsoft Windows 2000, XP, Vista, Windows 7
Open API	
	CGI commands to control camera Media SDK to handle streaming
Factory Default	
	Button
Power	
Power Input	DC 12V, DC12V/ POE
Power Consumption	3.6W
Dimension	
	144.3mm(Φ) x 115mm(H)
Weight	
	867g
Operating Environment	
Operating temperature	-20°C ~ 50°C
Storage temperature	-30°C ~ 60°C
Storage humidity	0% ~ 95% Non-condensing
Certification	
	CE, FCC Class A, RoHS, IP68, IK10
Warranty	
	24 months

Member of

### Dimension Diagram



### Distributed by:

### 3S PocketNet Technology Inc.

7F., No.5, Lane 16, Sec. 2, Sichuan Rd. Banqiao Dist.,  
New Taipei City 22061, Taiwan (R.O.C.)  
Tel: +886.2.8967.2909  
Fax: +886.2.8967.2779